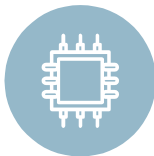


FAS06D

All-in-One Fingerprint OEM Module



Features



Embedded All-in-One
Highly Durable Optical Sensor



Patented Fake Finger
Detection



Applicable with
Fingerprint Terminal

Specification

Fingerprint Type	Optical	Power Consumption (mA)	Standby: Max 100mA Operation: Max 120mA
Resolution	500 dpi	Supply Voltage	DC 5V \pm 0.2V (S5)
Gray Scale	256 gray		DC 3.3V \pm 0.2V (S3)
Template Capacity	1,000 Templates	Encryption	Seed 128
Log Capacity	X	Operating Temperature	-20°C ~ +60°C
Enrollment Time	< 1 sec	Operating Humidity	10 ~ 90%, non-condensing
Verification Time	< 1 sec	Dimension (W x H x D)	21 x 53 X 27
Host Communication	UART (TTL)	FRR (False Rejection Rate)	< 0.1%
LFD	0	FRA (False Acceptance Rate)	< 0.0001%

